

# SENTINEL

 Bi-Weekly Parish Communication

Volume 40 Number 2

[www.ststephenpresbyterian.com](http://www.ststephenpresbyterian.com)

January 19, 2024

## **FACING THE FUTURE WITH HOPE POWERED BY MEMORIES OF GRATITUDE**

***Warner M. Bailey***

Since I retired from 22 years of service to the congregation of Ridglea Presbyterian Church on January 31, 2004, St. Stephen has been the church home for Mary and me. In the midst of figuring out how life would be going forward, this congregation welcomed us warmly and gave us new purpose. Thank you for this gift of hospitality and of mission.

Our coming here was essentially a return to a place I discovered in 1956 when I came as a freshman to TCU. I first met Bill Jablonowski when I was a staffer at Mo-Ranch, our conference grounds in the Texas Hill Country. I was attracted to his commanding presence and winsome personality. St. Stephen became my new church home. I sang in the choir and was president of the college fellowship group. When I decided to go to seminary, late in the summer of 1960, Bill was a strong encourager. St. Stephen became my sponsoring congregation. The Associate Pastor, Bill Henning, became a dear friend to this day.

I was called to First Presbyterian in Grapevine after graduation in 1964, where we also began our marriage. The church's style and culture showed St. Stephen's influence for which I was very grateful. On Christmas Eve, Mary and I would come to St. Stephen for midnight worship. Your Minister of Music, Eliza Cook, advised our church on the choice of our first pipe organ.

I am grateful that you have been given a spot over these past 20 years where I could share wisdom from experience with respected colleagues and to be free, mostly, from administrative responsibilities in order to have the opportunity to make contributions that were new and challenging to me. During the course of my time here, you have been my partner in my writing four books and editing a fifth. These publications have taken on complex problems in pastoral care—betrayal, the questioning of God's power and human capability, dealing with hostility and shame, and, recently, how to flourish amidst the most adverse circumstances. You have been my conversation partners through opportunities to teach, preach, and counsel. Thank you, especially for the invitation to give the Jablonowski Lecture last April.

I am grateful for the moments over the years where I could be pastor in a personal way in baptisms, weddings and funerals. These are occasions where faith becomes particular and accountable. It has been a privilege to be a guide to you on these special occasions.

I am grateful for the rich symbolism of our sanctuary and the flow and style of our worship. Beginning with singing under Elza Cook up to this very day under the brilliant leadership of Jordan Smith, the music ministry of this church has never faltered in its excellence. The marvelous combination of words that speak to the heart and music to carry them is a rare gift to my soul that we cannot take for granted. The mention of Christmas Eve, Holy Week, Kirkin' of the Tartans, All Saints, Remembrance of Baptism, Evensong will always bring a smile to my face.

There is no denying it, St. Stephen puts forth an impressive, even imposing face to the world. But the magic of this place is that this congregations turns that power into mission to the humblest. St. Stephen is known as a church that the Presbyterian Night Shelter can count on every week to provide sandwiches, and Room in the Inn to be ready each Thursday. This church is known as a place where families can count on to give their children shelter and nurture. House-bound folks can count on being called and checked on. Youth can count on being given awesome experiences. Veterans can count on being honored. In this regard, I am in awe of the work that Beth Fultz and Fritz Ritsch did in broadening our church's outreach.

***Continued on next page***

## FACING THE FUTURE - *continued*

I could go on and on, but I cannot stop without underscoring my astonishment at the unwavering continuity of strong leadership under which this church has prospered. Elders, Deacons, and Trustees have stepped up to their responsibilities in good times and bad. Financial campaigns and capital funds solicitations have been guided to successful achievement of their goals. Threats have been faced with calmness and resolve. I thank the Session for their endorsement of my work over these years.

Finally, I want to say how great an honor it has been to serve with such a fine group of professional leaders. My relationship with Fritz was special, and I owe much to his support. I learned from observing his style of pastoral leadership that was informed by his training in community organizing. We are blessed to have a strong interim leading us now with Elizabeth Callender. I appreciate her open-hearted personality and principle of inclusiveness.

Beth is amazing in her passion, creativity, determination, and compassion. I have drawn on her insights repeatedly, and marveled at how authentic is her work. Jordan is a wonder at this work. Mark Scott was an early guide when I was new to the congregation, besides being a beloved Minister of Music. Anne Barrett's administration makes what seems sometimes like chaos always turn out to be solid and productive. Eddie Shaw and Dexter Wilborn have cared for this place with a steady hand, and now we are in good hands with Rudy Lobato.

Mary and I hope that we can still be a part of your lives, if not on such a regular basis. We'll always be interested in what's happening in your life and your family. Looking ahead can be a little scary, but also full of new openings. Mary and I will be figuring this out as we meet each day. We will be upheld by the great memories of these past two decades and will remain proud of St. Stephen and your future.

## Registration Opens Soon! COME JOIN THE FUN!

January 8-15 : Current Students and their Siblings

January 16-22: Church Members

January 23-31: Waitlisted Families from 2023-2024

February 1: Public Registration Opens

DaySchool@ststephenpresbyterian.com



St. Stephen Presbyterian  
DAY SCHOOL

## SUPPLIES NEEDED FOR OUR FRIENDS AT QUAL TRAIL

- ♦ Toilet paper
- ♦ Travel size Toothpaste, Shampoo and Deodorant

**We also need your plastic grocery bags! We use them to bag vegetables and other food items for the residents at Quail Trail. We will have a box by tables in the Parish Hall narthex.**

**Any extra boxes you have are also needed for packing items.**



**ROOM IN THE INN** - Continues Every Thursday Night/Friday Morning Through March 1st in Parish Hall.

We have been at full capacity (15 men) each week. We have six more weeks in this session. We can always use additional volunteers. If you can make a bed, cook a meal, drive a van, sort clothing, or have a conversation with one of our guests, please let Mike Tyson or Matt Loynachan know. We can always use Innkeepers as well. **CURRENT NEEDS: winter coats and jackets**

**(size L and XL), men's washable pants and jeans, all sizes but preferably size 34 waist; small backpacks, rolling suitcases, and tennis shoes. Please place your donations in the bin outside the Church Office.**

Click on the link to volunteer: <https://www.signupgenius.com/tabs/63270D603A7C8EB7-pns2024>

## Members We Have Lost

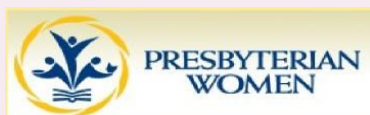
**Priscilla Harrier** (79) on December 18, 2023.  
**A memorial service will be held this Saturday, January 20 at 10:00 am and will be livestreamed on the St. Stephen website and later on YouTube.**  
A reception will follow in Parish Hall.

**Mary Pumphrey** (95), on December 28, 2023.  
No memorial service is planned at this time.

**Carol Steen** (76) on January 3, 2024.  
Carol donated her body to science. No memorial service is planned at this time.

**The SSPC Safety Committee** is in place for the purpose of evaluating the safety program which includes emergency protocols and response plans for a variety of weather, health, and situational emergency events. We are currently looking for a Safety Committee Coordinator, grant writer, and at-large members.

If you are interested in learning more and joining this committee, please contact Anne in the Church Office or email [admin@ststephenpresbyterian.com](mailto:admin@ststephenpresbyterian.com).



*All women of SSPC are invited to join us  
as we start the New Year!*

**2nd Tuesday of the Month (Jan - May)**  
**Presbyterian Women Council - 10:00 am**

**Morning Glories Circle  
Coffee and Bible Study - 10:30 am**

**1st and 3rd Tuesdays - 1:00 pm**  
**Card Ministry**  
**Make birthday cards for members!**

**Eastminster Room**

## IMPORTANT!

SSPC members should check their online directory listing to make sure we have your current contact information – phone numbers, address, emails.

In case of a medical emergency, let us know who to contact.

Call the Church Office (817) 927-8411 or email info to:  
[admin@ststephenpresbyterian.com](mailto:admin@ststephenpresbyterian.com).

## PRAYER REQUESTS

### CURRENT NEEDS

Ann Mills	Member
Elizabeth McCartney	Daughter of Brent McCartney
Rex & Michelle	Friends of Sam Montee
Davis Family	Friends of Elizabeth Bleggi
Greenman Brothers	Friends of Booty Jones

### MEMBERS WITH LONG-TERM NEEDS

Dale Henderson	Bee Ingalls
Natalie Hubbard	Angela & Ernest Jimenez
Jim & Faith Mallory	Ann Mills
Kitty Mitchell	Jean McCord
Ben Pennington	Dorothy St. John
Jody Wasson	Susan Cox

### FAMILY & FRIENDS WITH LONG-TERM NEEDS

Christy Green	Stepdaughter of Dexter Wilborn
Gretta Maples	Friend of Art Schmidt
Michael Young	Friend of Art Schmidt
Pam Elza	Daughter of Art Schmidt
Peter Longo	Friend of Jim Scott
Alvina Gaffney	Grandmother of Scott Gaffney
Marian Morse	Wendy Larmour's mother
Corinne Breshears	Daughter of Mimi & David Andrews
Steve Smith	Friend of Jim & Tammy Hille
Christy Ledesma	Friend of Kathy Flores
Heidi	Friend of Kurt & Sue Anderson
David Sandella	SSPC Sunday Security Officer
Robin Boldt	Cousin of Beth Haller
Curtis Hissam	Friend of Mimi & David Andrews
Sandra Wheeler	Sister of Darlene Myatt
Betsy Johnson	Cousin of George Bristol

## PARISH HEALTH NEWS

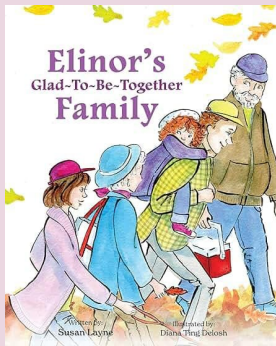
by Lynn Wilson, *Parish Nurse*

Age-related macular degeneration (AMD) is an eye condition that can lead to central vision loss. AMD makes it difficult to see straight ahead. People with macular degeneration have trouble completing everyday tasks like reading, driving, and working. You may notice that lines of a printed text look bent or wavy, straight objects look curved or bent, and flat objects look round. AMD is more common among people who are older than 55 years, and the risk of developing AMD increases as people get older. You're at higher risk if your parents or siblings have AMD, too. In addition, smoking has been linked to an increased risk of developing AMD.

If you notice any new vision changes, talk with your doctor right away. If you've already received a diagnosis of AMD, changes in your vision can be a sign that your condition is getting worse. If your macular degeneration suddenly or rapidly worsens, it maybe a sign that you're developing "wet macular degeneration". If this is the case, you may need treatment with an anti-VEGF eye injection to keep your vision safe.



**4TH FRIDAY BOOK GROUP MEETS  
FRIDAY, January 26, 2024 - 11:00 am  
St. Stephen Presbyterian Church  
Eastminster Room**



Book: **Elinor's Glad-To-Be-Together**  
Author and Reviewer: **Susan Layne**

*Three-year-old Elinor waits and watches, for Grandma and Grandpa will soon arrive on an airplane for a great-day adventure by the sea. There, Grandma buys treats for too-many-quacking ducks and pushes Elinor high and fast, back and forth, in the piece-fell-off swing. At the end of the day, sleepy Elinor is carried back to bed and dreams of sailboats and ferries, joy and laughter.*

*Join Elinor for her perfect day of family fun, sweet memories, and love that fills everyone's heart—even when the plane flies away.*

Susan Webb Layne is a fourth-generation Texan, who never expected her fifth-generation children to leave Fort Worth and make their homes in other locations. Distant grandchildren presented a challenge for Susan, who grew up spending lots of time with near-by grandparents. An early vacation to visit her own far-away granddaughter on Maryland's Eastern Shore inspired Elinor's Glad-To-Be-Together Family and rekindled Susan's lifelong love of writing. Susan and her husband, Robert, continue to live a few miles from her childhood home. Her children and grandchildren are frequent visitors and continue to be the center of her life in spite of geographic location.

**Lunch \$10 by RSVP only.** Call Sharon LeMond, 817-253-0990 or [sharonlemond@me.com](mailto:sharonlemond@me.com)

## **PCHAS Thanks SSPC!**

200 - That's the number of children who received Angel Tree gifts this year through Presbyterian Children's Homes and Services.

You made Christmas happen for 200 children. We are so grateful for all your work, generosity, thoughtfulness, and help!

Working with you and your congregation on the Angel Tree is one of my favorite projects. And you are amazing! Churches and businesses provided new pj's for kids, stuffed stockings to overflowing, carefully read through wish lists and worked to fill those wishes so thoughtfully!

And then you held toy drives, purchased gift cards; all to make sure that no one went wanting. It touches my heart . . . and make Christmas so special for our children and our families.

In Fort Worth, Keller, Itasca, Wichita Falls, Abilene, and Lubbock, you joined 30 congregations and businesses to provide gifts for nearly 200 children.

Thank you! Thank you for being our partner in ministry! We can't do it without you! May your new year be filled with blessings!

Grace and Peace,  
*Maria Shupe*  
PCHAS Development Officer

### **It's Sunday Morning – Do You Know Where Your Name Badge Is?**

**Your name badge is a great way for visitors to meet members. And for members to greet other members!**

**All members are given name badges after they join and they are kept on the center table in the Narthex.**

**This Sunday, be sure to wear your badge – and remember to return it to the basket after the service!!**

### **Sunday Chancel Flowers**

Honor the memory of a loved one, celebrate a birthday, anniversary, or mark a special occasion, by ordering flowers to be placed in the church on your special Sunday. Your name and occasion will be printed in the bulletin. After worship, take your flowers home or donate them to the Visitation Team who make smaller arrangements for delivery to our members who are ill or just in need of some cheer. **Contact Tammy Hille (682)-365-3295 to reserve your date.**

## Valentine Boxes For Collegians, Military, & Medical Members and Friends



Help the Youth Fellowship and Children's Sunday School Classes remember our Collegiate and Military and Medical members and friends of

St. Stephen this Valentine's season on **Sunday, FEBRUARY 4, 9:45 a.m. in the Crafts Room**, upstairs in Ed. Bldg.

We need:

- Addresses to Mail packages.
- Candy, Cookies, wrapped.
- Trinkets or office supplies.
- Sunday School Kids involvement in decorating and
- Stuffing. Can you help us, Sunday, February 4, 9:45 a.m. in the Craft's Room?



## Souper Bowl of Caring—Benefitting Tarrant Area Food Bank!

Help fill the Tarrant Area Food Bank with donations by voting with your dollars on the outcome of the Super Bowl. Youth from all over the USA are seeking funds to feed millions this year. Make your prediction on Super Bowl Sunday for KC Chiefs? Baltimore Ravens? SF 49er's? Detroit Lions? Buffalo Bills? TB Buccaneers? GB Packers? Houston Texans? Two of those will be in the race! Consider helping stop hunger with playful fun Feb. 11!



## Don't Forget Children & Youth Sunday School Classes!!

### Youth/ Confirmation Class

Meets in Disciples n 9:45—10:30 a.m. so they can be Acolytes in Service. Taught by Courtney Mullins and Robin Ow Honda.

### Elementary Children

Meet in Crafts Room 10—10:45 a.m. Taught by Tammy Hille and Kay Newton.

### Pre-K Children

Meet in Godly Play Rm. 10—10:45 a.m. Taught by Beth Fultz and Brandy Scott.

## Youth Fellowship News

START Time for most Youth Fellowship activities are 5:30—7:30 p.m. This is to accommodate the arrival of all our youth participants.

**January 21 A Little More Programming and Discussion & a little fast food.**



**January 28 Starting Decorating Valentine Envelopes & Cards for Collegians, Military, etc.**



**February 4 Decorating/ Stuffing, with Sunday School Kids, the Valentine Envelopes. DURING SUN. SCHOOL. Finish up that night.**



**February 11 Souper Bowl of Caring at Worship. Youth Mission Trip Talk After Church.**

All youth ages 6th—12th are invited to have fun, explore your faith, do mission projects, and more!

## Children's Choir & Choristers Rehearsals Wednesdays 5—6 p.m.

The Children's Choir with Chorister Helper happens every Wednesday. We enhance our experience with rhythm instruments and chimes, boom whackers and steel drums along with our religious singing.

We will sing again in church on:

♦ ♦ **Sunday, February 11, on Super Bowl Sunday**



♦ ♦ **Sunday, March 24, Palm Sunday (early this year)**



♦ ♦ **Sunday, April 28, Children's Sabbath**



We hope you will join us for the musical experience of singing, learning notes and rhythms.

**Please consider joining St. Stephen Children's Choir!**

## Searchers Adult Class Starting Up with Some Fine Choices This Winter!

We are lining up some interesting speakers for our class this year. Paul Lewis, one of three class coordinators will finish out the last of his six-part series on "Worship: Why We Do What We Do."

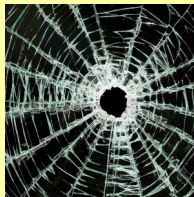


Join us for our upcoming speakers:

**January 21— Paul Lewis** final class on "Worship: Why We Do What We Do!"

**January 28 -** Wired Word, contemporary news juxtaposed with Biblical teachings. Teacher TBA

**February 4—James and Monique Arritt from the SIL International**, formerly called "Summer Institute of Linguistics" on **Scripture Based Trauma Healing for groups who have experienced catastrophes, trauma, genocide, etc.**



**February 11, - Heidi Swartz**, on "Organizing the Cowtown Marathon". The class should understand how many people are involved from the church and how much of Fort Worth it takes to have this event!!



For more information on these classes, contact Adelaide Leavens or Paul Lewis or Peggy Bender.

## Sunday School Coffee Bar and Donuts Opens at 9:30 a.m. Each Sunday In Parish Hall for All Classes

The Coffee Bar is open to all who participate in Sunday School. Come to Parish Hall for a bit of refreshment before diving into God's word!



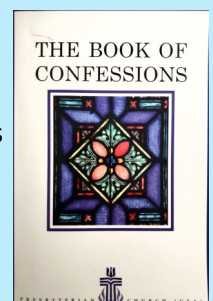
## Trinity Adult Bible Study Continues the Examination of the Confessions

Angela Springfield, teacher of the Trinity Adult Bible Study will continue the examination of the Confessions, now focused on the Four Protestant Reformation confessions, the bridge between the Lutherans and the Scots.

The Class will study these confessions with these questions in mind:

- #1. When was it written?
- #2. Where was it written?
- #3. What were the circumstances of writing the confession?
- #4. Who wrote it?
- #5. What are the themes of the Confession?

Trinity Class has talked about the riches and wealth of the Roman Catholic Church and the abuses of privilege. Some of the topics discussed so far have been these:



Land owned by the churches and monasteries, the buying of clergy positions (land was inherited by oldest son without education in the ministry; while others bought a clergy position), the selling of indulgences, money brought in by getting permission for a baptism, confirmation, weddings, funerals, and annulments. There was not much of a middle class to the lower classes really suffered in receiving spiritual needs.

Come, join the class in the Northminster Room each Sunday morning, 9:45—10:45 a.m.

# January 21- February 10, 2024

SUNDAY	MONDAY	TUESDAY	WEDNES-	THURSDAY	FRIDAY	SATURDAY
21  8:30 am Worship and Communion  9:30 am Sunday School  <b>11:00 am Worship - INSTALLATION OF OFFICERS</b>  <b>12:15 pm STEWARDSHIP COMMITMENT LUNCH Parish Hall</b>  5:00 pm Youth Group	22  9:30- - 2:30 pm Day School  1:30 pm Staff meeting	23  <b>7:00 pm SESSION MTG Eastminster</b>  7:30 pm Troop 17 Scout House	24  9:30 - 2:30 pm Day School  Noon Bible Study Zoom  5:30 pm Children's Choir  6:30 pm Sanctuary Choir	25  7:00 am Morning Prayers Chapel  <b>3:30 pm Room in the Inn Parish Hall</b>  6:30 pm Handbells	26  <b>11:00 am 4th Friday Book Group Eastminster             RSVP for lunch - \$10</b>	27
LISA TRAMMELL - ON VACATION						
28  8:30 am Worship and Communion <i>Dr. Warner Bailey</i>  9:30 am Sunday School  11:00 am Worship <i>Dr. Warner Bailey</i>  <b>12:15 pm RECEPTION for Dr. Bailey Parish Hall</b>	29  9:30 - 2:30 pm Day School  1:30 pm Staff meeting  <i>Articles for Sentinel are due today!</i>	30  <b>7:00 pm Church Life Cmte Zoom</b>  7:30 pm Troop 17 Scout House	31  9:30 - 2:30 pm Day School  Noon Bible Study Zoom  5:30 pm Children's Choir  6:30 pm Sanctuary Choir	<b>FEBRUARY 1</b>  7:00 am Morning Prayers Chapel  <b>3:30 pm Room in the Inn Parish Hall</b>  <b>4:00 pm Worship Cmte Zoom</b>  6:30 pm Handbells	2	3
LISA TRAMMELL - ON VACATION						
PASTOR ELIZABETH - ON VACATION THRU FEB. 4						
4  8:30 am Worship and Communion  9:30 am Sunday School  11:-00 am Worship  <b>4:00 pm Troop 17 Court of Honor Parish Hall</b>  5:00 pm Youth Group	5  9:30 - 2:30 pm Day School  1:30 pm Staff meeting	6  7:30 pm Troop 17 Scout House	7  9:30 - 2:30 pm Day School;  Noon Bible Study Zoom  5:30 pm Children's Choir  6:30 pm Sanctuary Choir	8  7:00 am Morning Prayers Chapel  <b>3:30 pm Room in the Inn Parish Hall</b>  6:30 pm Handbells	9	10



2700 McPherson Avenue  
Fort Worth, Texas 76109-1404

## St. Stephen Presbyterian Church Staff

[www.ststephenpresbyterian.com](http://www.ststephenpresbyterian.com)

**Rev. Dr. Elizabeth J. Callender, Interim Pastor**

[elizabeth@ststephenpresbyterian.com](mailto:elizabeth@ststephenpresbyterian.com)

**Rev. Dr. Warner M. Bailey, Theologian-in-Residence**

[mgwmbailey@sbcglobal.net](mailto:mgwmbailey@sbcglobal.net)

**Jordan R. Smith, Organist & Director of Music Ministries**

[jordan@ststephenpresbyterian.com](mailto:jordan@ststephenpresbyterian.com)

**Beth Fultz, Director of Christian Education**

[beth.fultz@ststephenpresbyterian.com](mailto:beth.fultz@ststephenpresbyterian.com)

**Lisa Trammell, Business Manager**

[busmgr@ststephenpresbyterian.com](mailto:busmgr@ststephenpresbyterian.com)

**Anne Barrett, Office Administrator**

[admin@ststephenpresbyterian.com](mailto:admin@ststephenpresbyterian.com)

**Lauren Daniels, Communications Coordinator**

[lauren@ststephenpresbyterian.com](mailto:lauren@ststephenpresbyterian.com)

**Lauren Ferguson, Day School Director**

[dayschool@ststephenpresbyterian.com](mailto:dayschool@ststephenpresbyterian.com)

**Rudy Lovato, Facilities Superintendent**

[rudy@ststephenpresbyterian.com](mailto:rudy@ststephenpresbyterian.com)



**WORSHIP SERVICE:**

**SUNDAY SERVICES | SEPT - MAY**  
**2 SERVICES - 8:30 AM AND 11:00 AM**  
**LIVE STREAM ON WEBSITE & YOUTUBE**

**OFFICE HOURS:**

**MONDAY-THURSDAY 8:30 AM - 4:30 PM**  
**FRIDAY 8:30 AM - 3:00 PM**

**TELEPHONE:**

**(817) 927- 8411**